

Model 3 Tank Washer 8000 1600



The Model 3 Tank Washer is an automatic bulk tank washer system designed to clean bulk tanks with a minimum of labor and expense.

FEATURES

- Wall mounting of control panel keeps components away from the corrosive environment near the wash vat.
- The Model 3 is internally fused for added safety.
- One piece manifold directs water without problems of leaking hoses.

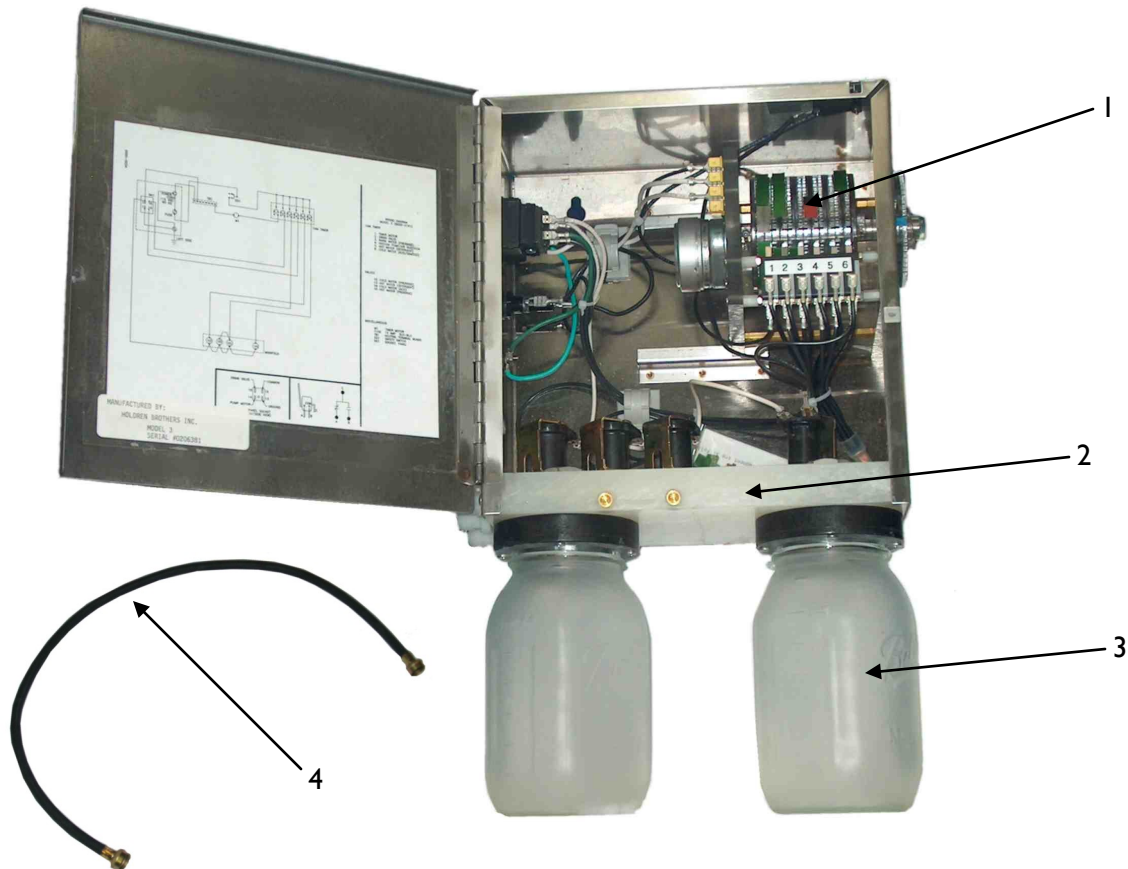
BENEFITS

- Timer assembly, switches, and motor can be replaced individually -- no need to replace entire unit..
- Adjustable water fill feature allows this unit to be adapted to a large variety of water supply situations.
- Can be installed on any atmospheric or vacuum type bulk tank.

ACCESSORIES

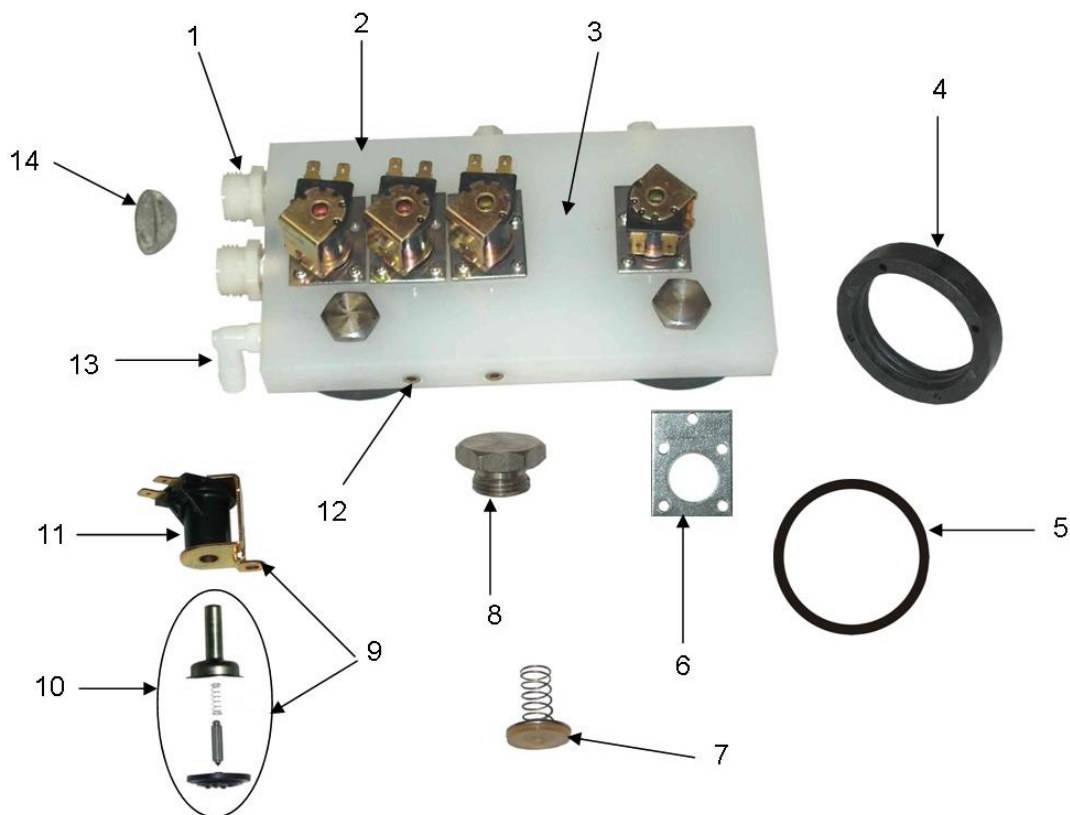
- Special spray sticks available.
- Model 6 Diverter
- Model 7 Drain Valve 2", normally open.
- Model 10 Drain Valve,

Model 3 Control Panel



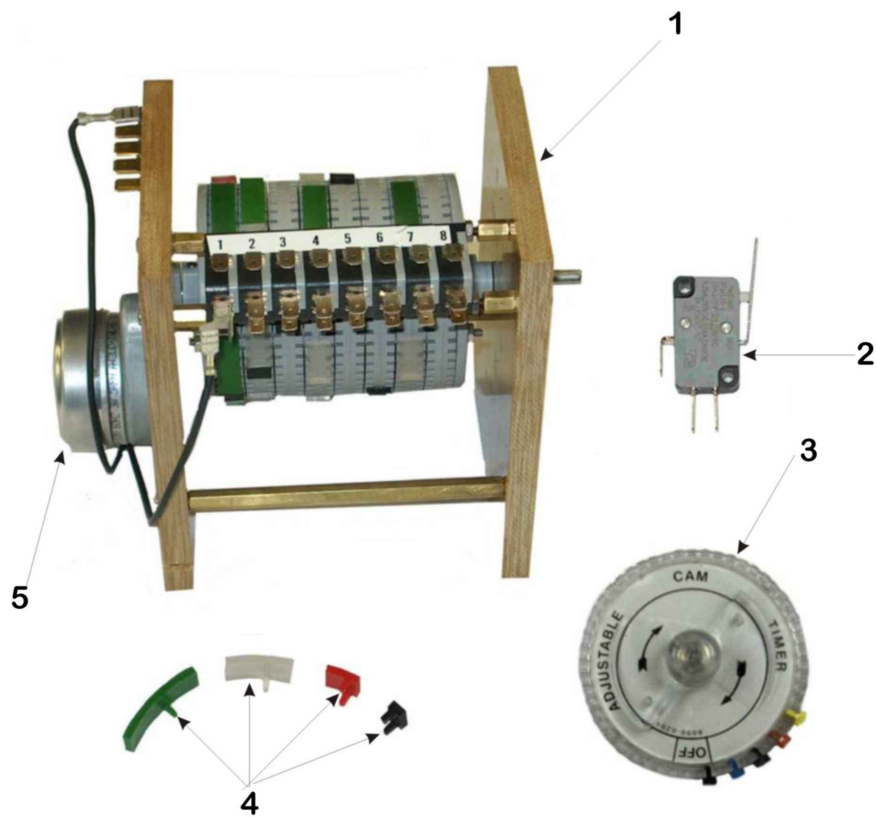
NO.	PART	DESCRIPTION
1	8001 0006	Adjustable Cam Timer Assembly
2	8000 0102	Manifold Assembly
3	7000 0011	Coated Jar
4	8000 0084	3/8" ID x 3 Ft. Feed Hose

Model 3 Manifold Assembly



NO.	PART	DESCRIPTION
1	4000 0064	GHT Adapter
2	8000 0103	Manifold Block for Model 3
3	8000 0102	Manifold Assembly Complete for NW II & TW
4	8000 0041	Jar Adapter
5	8000 0756	Jar Gasket
6	8000 0704	Hold Down with 5 Holes
7	8000 0554	Check Poppet Replacement Kit
8	8000 0035	Check Plug
9	8000 0707	Valve Operator Complete
10	8000 0550	Diaphragm Replacement Kit
11	5000 0064	Coil for Hot & Cold Valve
12	7000 0348	1/8" Brass Square Head Plug
13	4000 0039	1/4" NPT Elbow Hose Adapter
14	7000 0184	Screen
N/S	2000 0013	Self Tapping Screw #6 x 1-1/4"

Model 3 Timer



NO.	PART	DESCRIPTION
1	8001 0006	6 Cam Timer Complete
2	8000 0508	Lever Switch
3	8000 0512	Timer Knob for Adjustable Cam Timer
4	8000 0542	Replacement Segment Kit (12 of each color)
5	8000 0514	5 RPH Motor with Wire Assembly

Model 4 Portable Pumping Unit 8000 1625



The Pumping Unit can be installed on any atmospheric or vacuum type bulk tank.

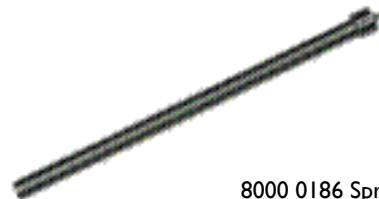
The following items need to be ordered separately and are not included with the Pumping Unit.

8000 0164 Locking Adapter - 1-1/2"

8000 0165 Locking Adapter - 1-9/16"

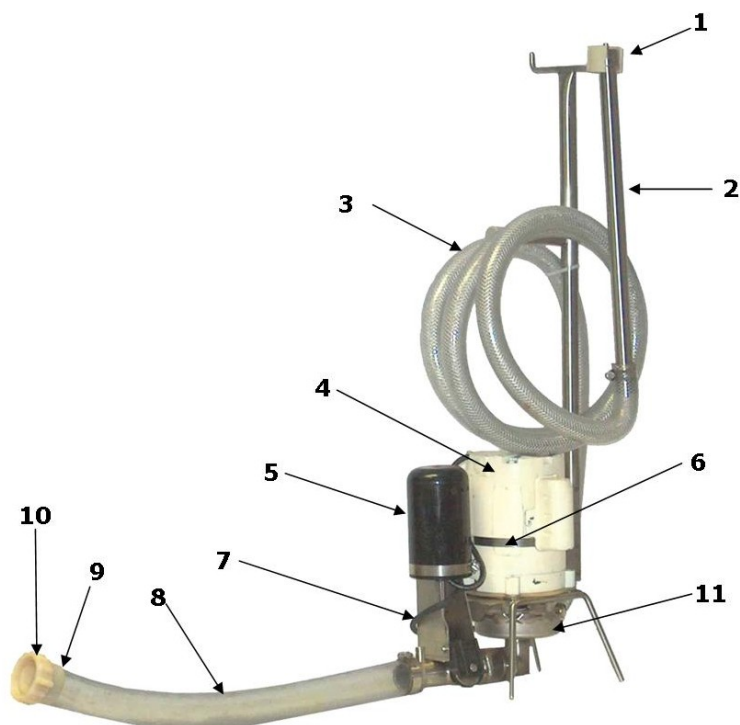


8000 0625 Suction Hose Plug



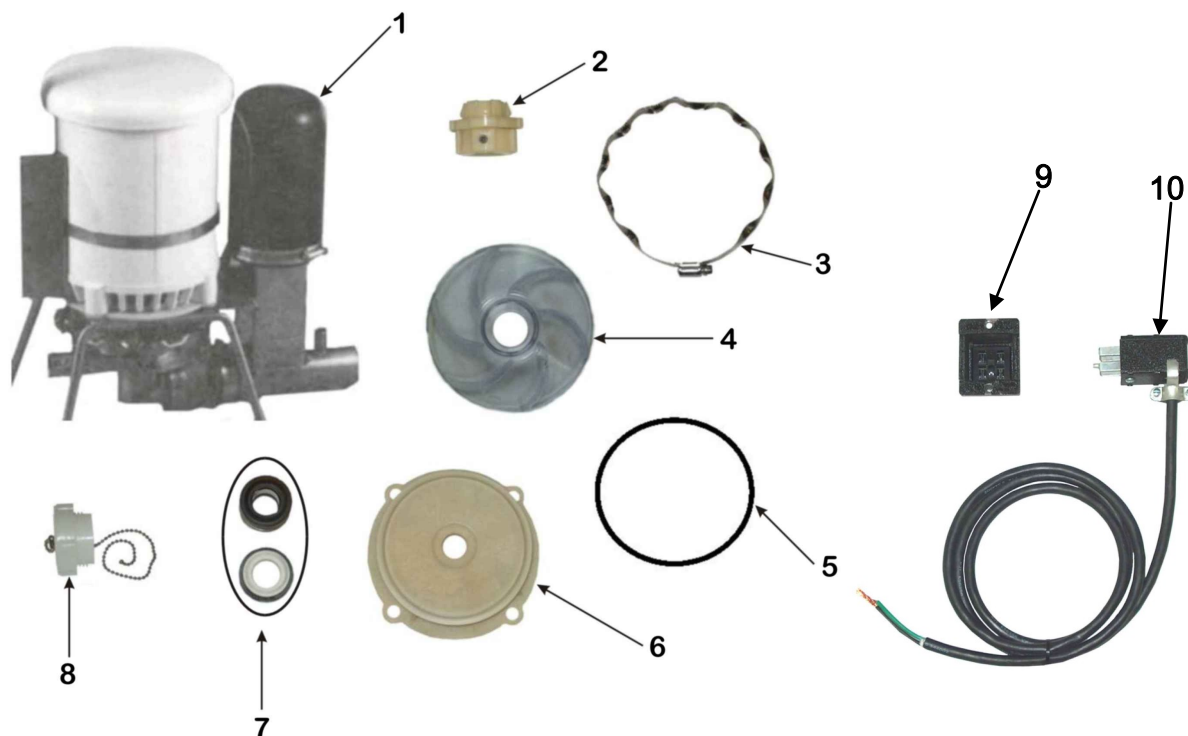
8000 0186 Spray Stick

Model 4 Replacement Parts



NO.	PART	DESCRIPTION
1	8000 0572	Spray Stick Holder—Sold Separately
2	8000 0186	Spray Stick for Atmospheric Tank - Up to 15 feet—Sold Separately
	8000 0189	Spray Stick for Atmospheric Tank - Over 16 feet— Sold Separately
3	8000 0724	Discharge Hose - 13 feet
4	8000 0541	Motor Assembly
5	8000 1647	Model 10 Drain Valve
6	6000 0111	Hose Clamp - 5-5/8" x 6-1/2"
7	8000 0339	Power Cord (includes plug)
8	8000 0721	Suction Hose Assembly - includes
	8000 0573	Suction Hose
9	8000 0574	Ferrule
10	8000 0568	Nut - 1-1/2"
N/S	8000 0625	Suction Hose Plug
N/S	8000 0553	Nylon Adapter
11	8000 0535	Pump Assembly
N/S	5000 0078	Power Cord Plug
N/S	8000 0811	Retainer for Spray Stick

Portable Pumping Unit Replacement Parts



NO.	PART	DESCRIPTION
1	8000 1647	Model 10 Drain Valve
2	8000 0164 8000 0165	1-1/2" Locking Adapter 1-9/16" Locking Adapter
3	8000 0581	Stainless Steel Clamp
4	8000 0579	Impeller
5	7000 0187	4-1/2" ID 'O' Ring
6	8000 0539	Endplate Assembly
7	8000 0587	Seal Assembly
8	8000 0573	Suction Hose Plug
9	5000 0035	Power Socket (Mounts in Control Box)
10	8000 0339	Power Cord with Plug

Model 12 8000 1660



The Model 12 Pipeline Washer is designed to automatically clean or sanitize dairy farm pipelines with a minimum of labor and expense.

FEATURES

- Wall mounting of control panel keeps components away from the corrosive environment near the wash vat.
- The Model 12 is internally fused for added safety.
- One piece manifold directs water without problems of leaking hoses.
- The fully programmable cam timer makes it easy to tailor the Model 12 to the requirements of each dairy operation.

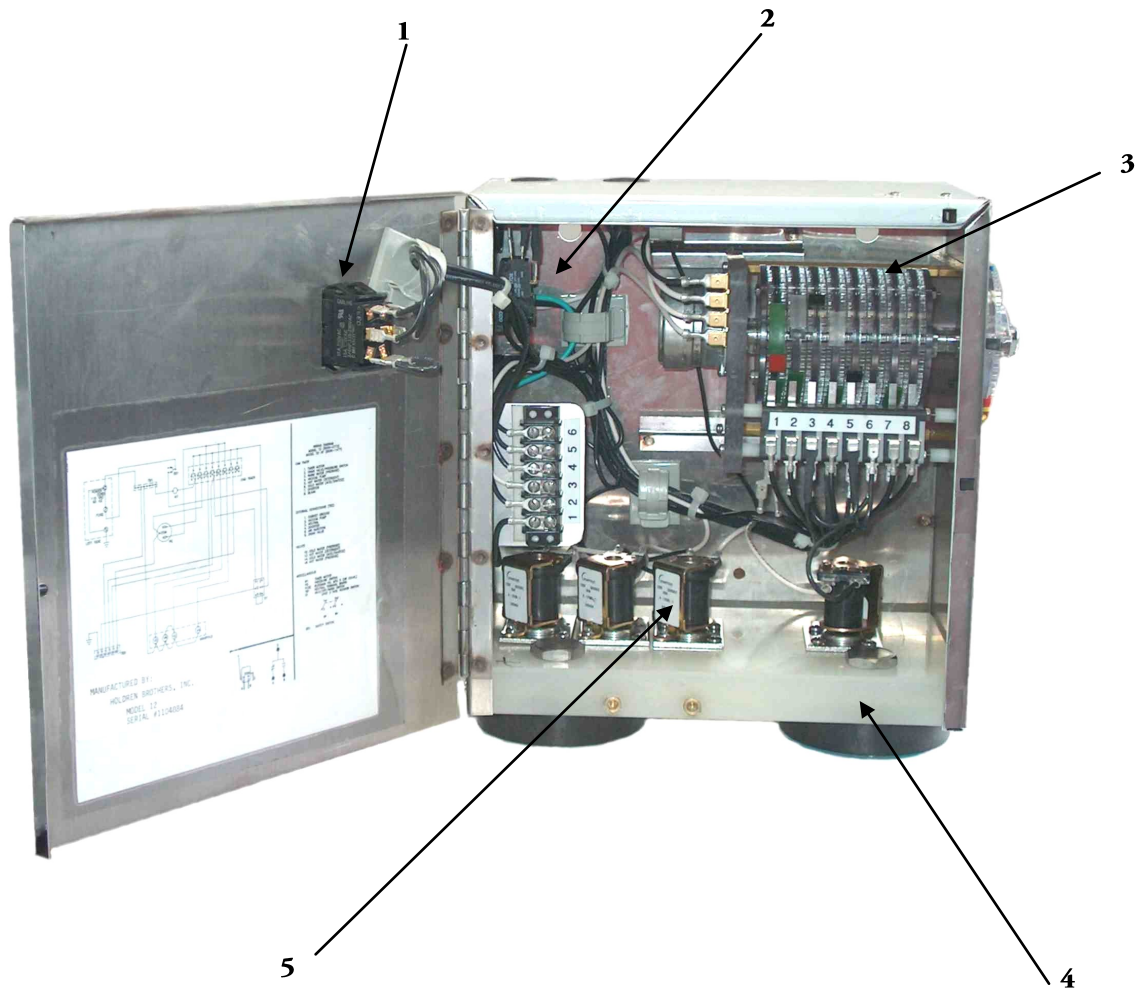
BENEFITS

- Timer assembly, switches, and motor can be replaced individually -- no need to replace entire unit.
- Pressure sensitive water level monitor assures constant gallonage regardless of water supply fluctuations.

ACCESSORIES

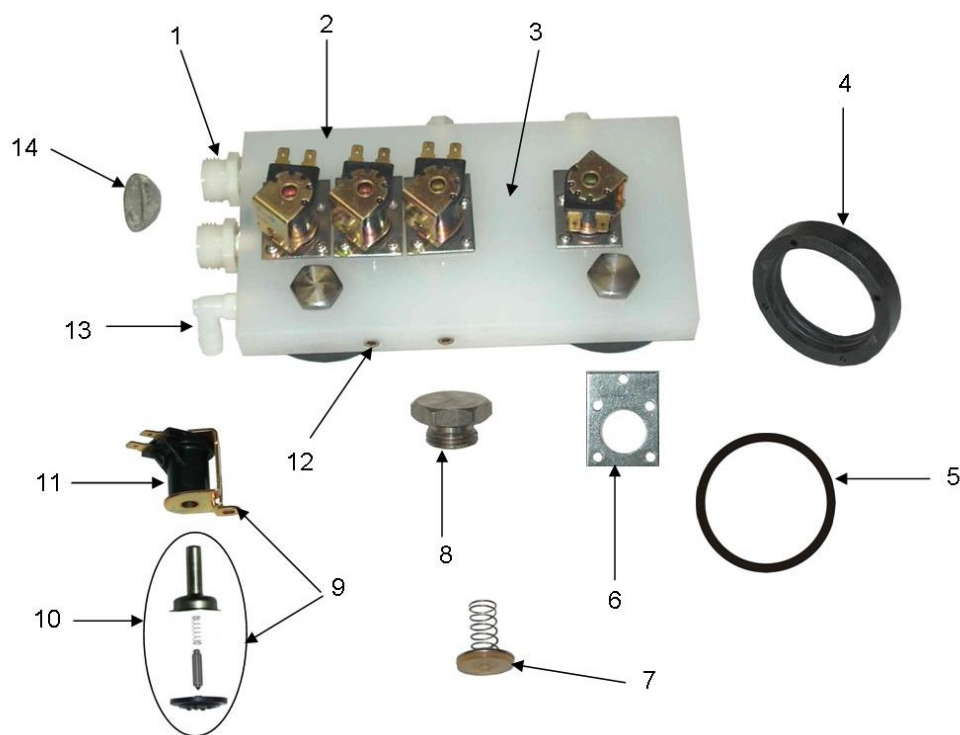
- Model 6 Diverter Assembly.
- Model 7 Drain Valve 2", normally open.
- Model 10 Drain Valve, 1-1/2" automatic vacuum type.

Model I2 Control Panel



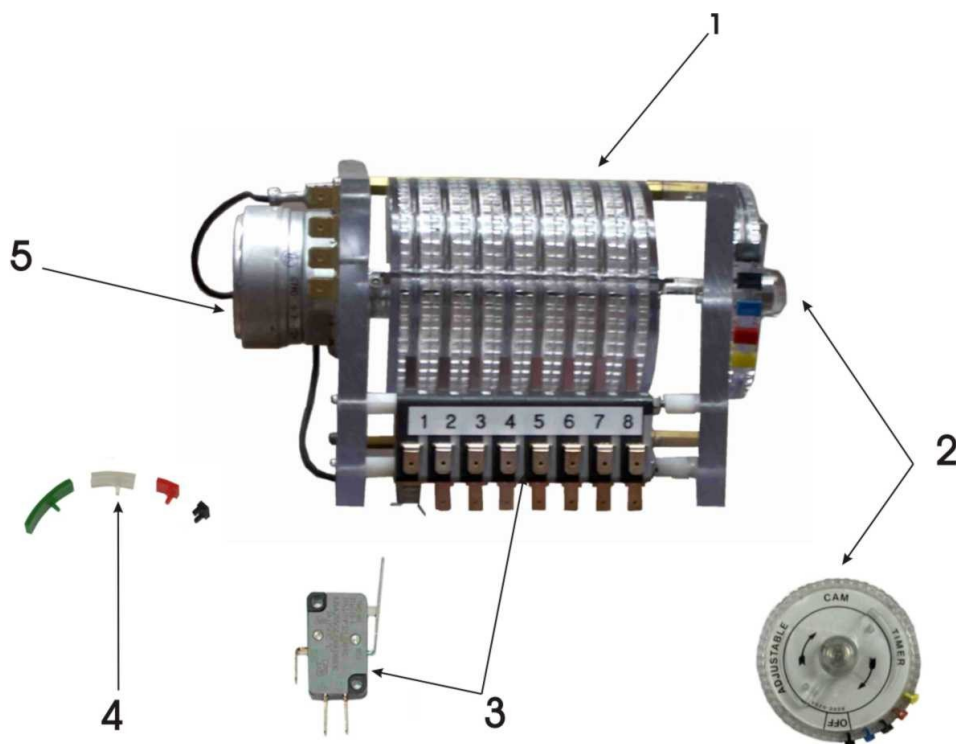
NO.	PART	DESCRIPTION
1	5000 0002	DPDT 3 Position Switch
2	8000 1972	Pressure Switch
3	8001 0008	Adjustable Cam Timer
4	8000 0102	Manifold Assembly
5	8000 0707	Valve Operator Assembly

Model 12 Manifold Assembly



NO.	PART	DESCRIPTION
1	4000 0064	GHT Adapter
2	8000 0103	Manifold Block for Model 12
3	8000 0102	Manifold Assembly Complete for Model 12
4	8000 0041	Jar Adapter
5	8000 0756	Jar Gasket
6	8000 0704	Hold Down with 5 Holes
7	8000 0554	Check Poppet Replacement Kit
8	8000 0035	Check Plug
9	8000 0707	Valve Operator Complete
10	8000 0550	Diaphragm Replacement Kit
11	5000 0064	Coil for Hot & Cold Valve
12	7000 0348	1/8" Brass Square Head Plug
13	4000 0039	1/4" NPT Elbow Hose Adapter
14	7000 0184	Screen
N/S	2000 0013	Self Tapping Screw #6 x 1-1/4"

Model 12 Timer



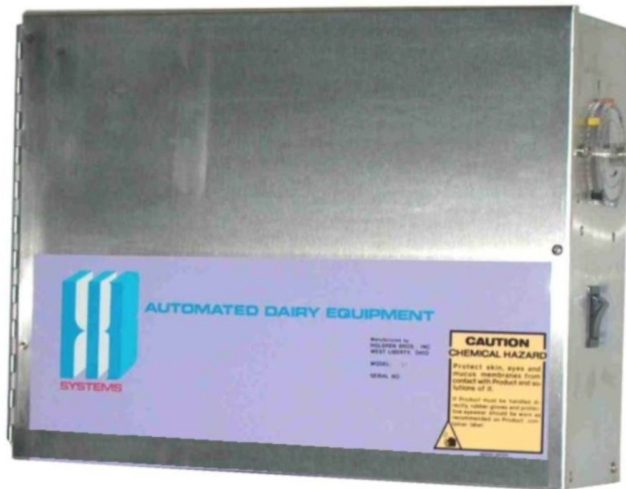
NO.	PART	DESCRIPTION
1	8001 0008	8 Cam Timer Complete
2	8000 0512	Timer Knob for Adjustable Cam Timer
3	8000 0508	Lever Switch
4	8000 2080	Replacement Segment Kit (12 of each color)
5	8000 0514	5 RPH Motor with Wire Assembly

Model 12 Replacement Parts



NO.	PART	DESCRIPTION
1	8000 0084	3/8" ID x 3' Feed Hose
2	7000 0011	Coated Jar
4	8000 0958	24 Hour Timer
5	5000 0002	Milk/Off/Wash DPDT 3 Position Switch
6	8000 1972	Pressure Switch
7	8000 1461	Sensing Tube Assembly
N/S	8000 0497	Pressure Switch Hose 7/16" OD x 10'

Model 23 Control Panel 8000 1735



The Model 23 Pipeline Washer is designed to automatically clean and sanitize dairy farm pipelines with a minimum of labor and expense. The 24 hour sanitize timer allows the user to set the time of day the pipeline will be automatically sanitized. The modular unit can be connected to the dairyman's choice of remote water and chemical systems.

FEATURES

- Wall mounting remote from wash vat.
- Internally fused.
- Fully programmable cam timer.
- Mechanical cam timer.
- Individual switches for component control.
- Vacuum pump control relay.
- Terminal strip for component connection.

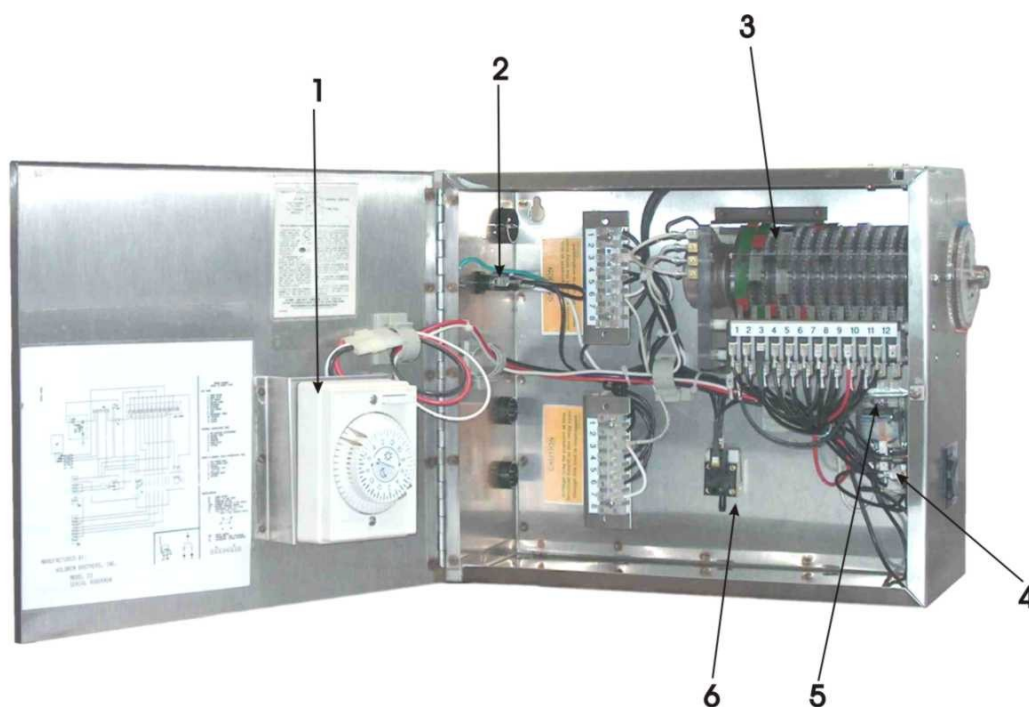
ACCESSORIES

- Peristaltic Pumps
- External Water Valve

BENEFITS

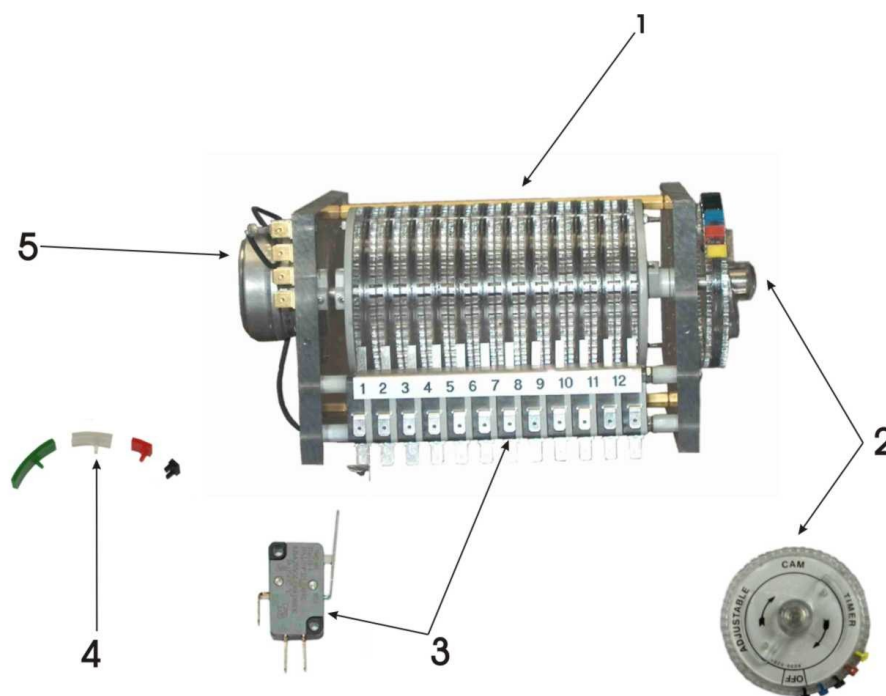
- Helps prevent component corrosion.
- Protects components from electrical shorts.
- Easy to tailor the washing cycles to fit the requirements of the system.
- Is not affected by power outages or electronic freeze-ups.
- More reliable and lower replacement costs.
- Isolates high voltage from control unit.
- Easier and faster installation.
- Assures proper water level in wash vat regardless of fluctuations in water pressure.

Model 23 Inside Control Panel



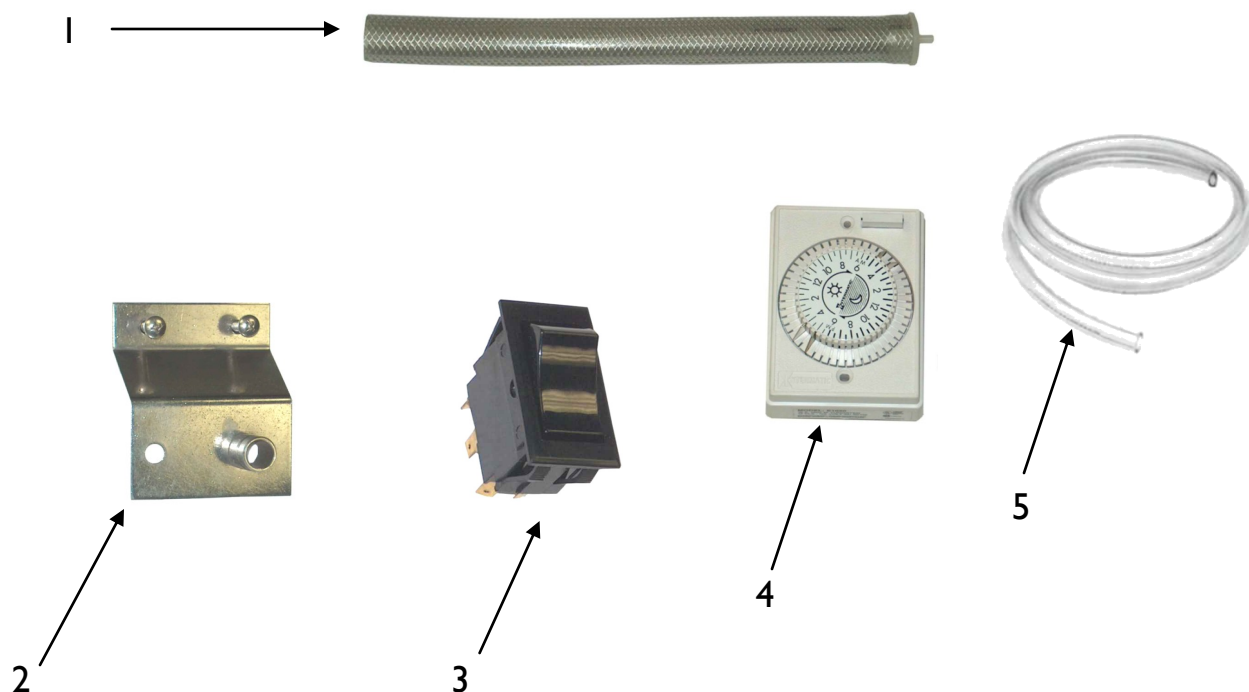
NO.	PART	DESCRIPTION
1	8000 0958	24 hour Mechanical Timer with Leads
2	5000 0010	Fuse Holder
3	8001 0012	Adjustable Cam Timer
4	5000 0002	DPDT 3 Position Switch
5	5000 0009	Relay, 10 Amp
6	8000 1972	Pressure Switch

Model 23 Timer



NO.	PART	DESCRIPTION
1	8001 0012	12 Cam Timer
2	8000 0512	Timer Knob for Adjustable Cam Timer
3	8000 0508	Lever Switch
4	8000 2080	Replacement Segment Kit (12 of each color)
5	8000 0514	5 RPH Motor with Wire Assembly

Model 23 Replacement Parts



NO.	PART	DESCRIPTION
1	8000 1461	Sensing Tube Assembly
2	8000 0095	Anti-Siphon Hose Bracket
3	5000 0002	DPDT 3 Position Switch
4	8000 0958	24 Hour Timer
5	8000 0497	Pressure Switch Hose 7/16" OD x 10'

Peristaltic Pumps

8000 1920—35 oz. per minute
8000 1902—8 oz. per minute



Two models of peristaltic pumps are available for dispensing chemicals from their containers into the wash vat. The PP-8 model delivers 8 ounces per minute and for larger systems, the PP-35 delivers 35 ounces per minute. The pump is mounted on a PVC enclosure which houses the motor and electric connections. Pumps can be remotely mounted in the most desirable locations. Power to operate the pumps is supplied from the **Model 23 Control Panel** (shown) with multiple one minute segments. If more precise dispensing is required, the **Electronic Timer** (shown—P/N 8000 1901) can be added and mounted inside the control panel. The electronic timer controls the run time of the peristaltic pump to the precise amount of time needed for the desired amount of chemical.

FEATURES

- Precisely controls chemical dispensing
- Closed chemical handling systems
- Long-life flexible tubing
- Pump mounted externally
- Individually fused

BENEFITS

- Can reduce chemical usage
- Reduces the danger to personnel
- Reduces the required maintenance
- Easy to service
- Motor is protected

Model 31 - Hi Flow

8000 1690



The Model 31 Pipeline Washer is designed to automatically clean or sanitize dairy farm pipelines. The 24 hour sanitize timer allows the user to choose and set the time of day the pipeline will be automatically sanitized.

FEATURES

- Wall mounting of control panel keeps components away from the corrosive environment near the wash vat.
- The Model 31 is internally fused for added safety.
- One piece manifold directs water without problems of leaking hoses.
- The fully programmable cam timer makes it easy to tailor the Model 31 to the requirements of each dairy operation.
- Equipped with a relay to isolate the 220 magnetic starter voltage on the vacuum pump from the cabinet.

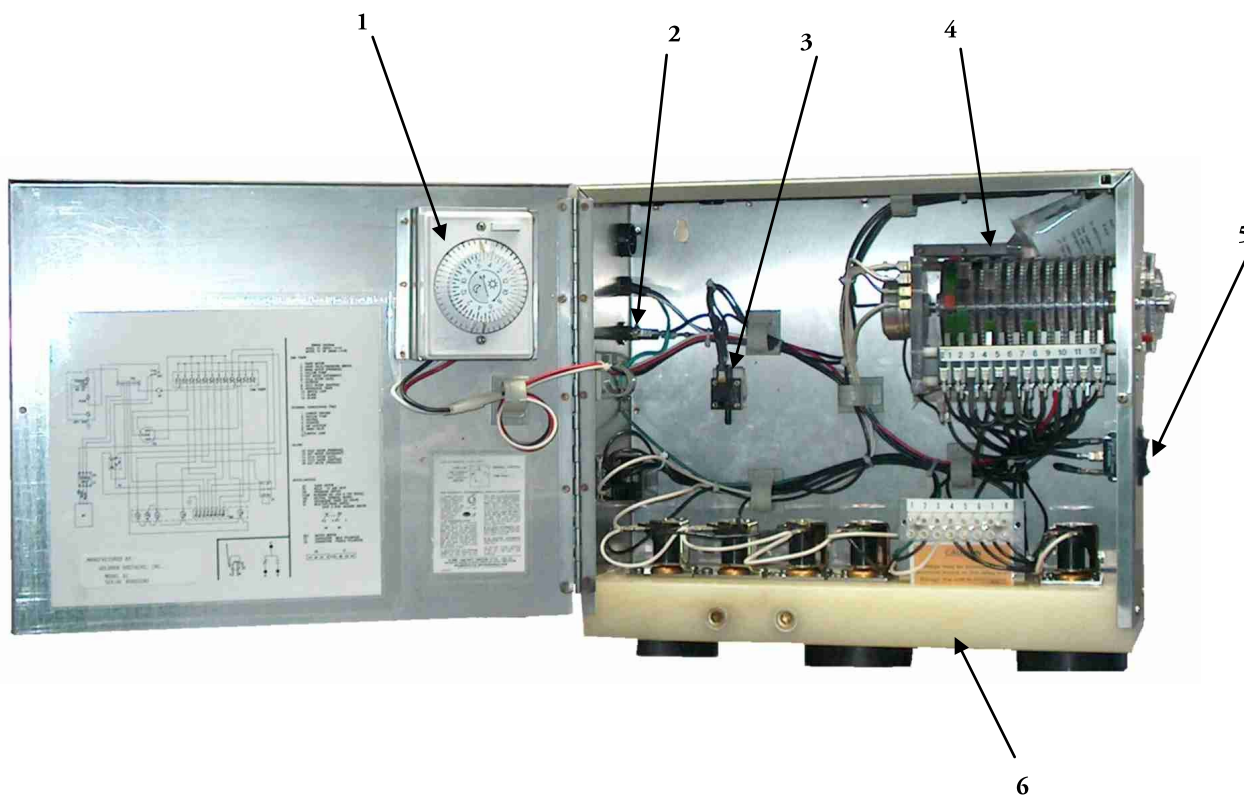
BENEFITS

- Timer assembly, switches, and motor can be replaced individually -- no need to replace entire unit.
- Pressure sensitive water level monitor assures constant gallonage regardless of water supply fluctuations.
- Can be installed on any atmospheric or vacuum type bulk tank.

ACCESSORIES

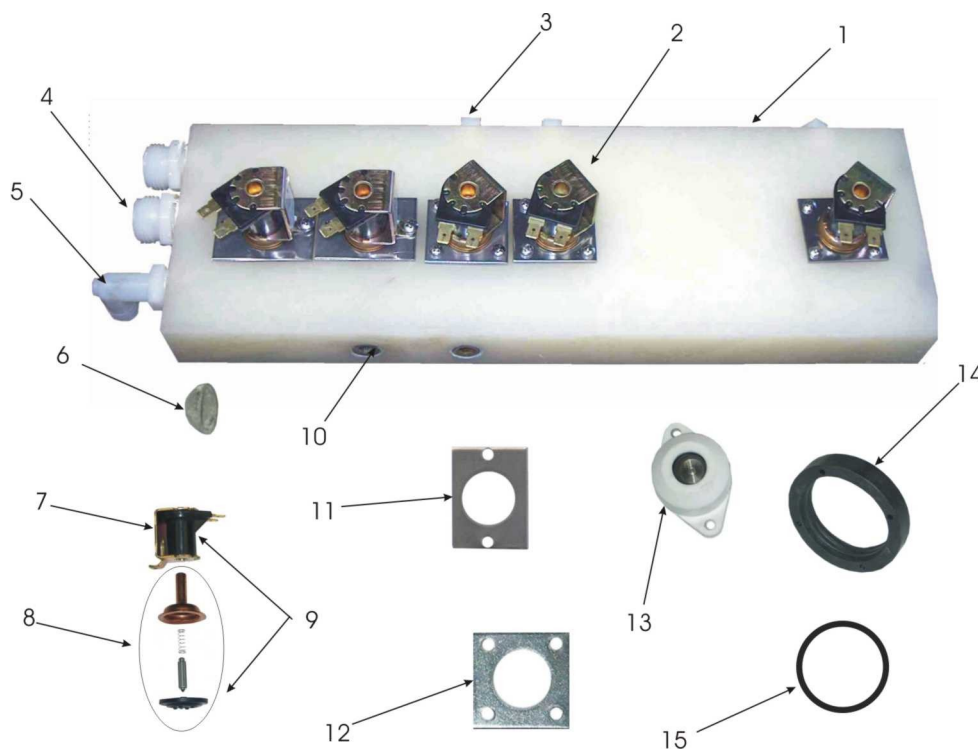
- Model 6 Diverter Assembly.
- Model 7 Drain Valve 2", normally open.
- Model 10 Drain Valve, 1-1/2" automatic vacuum type.

Model 3I Control Panel



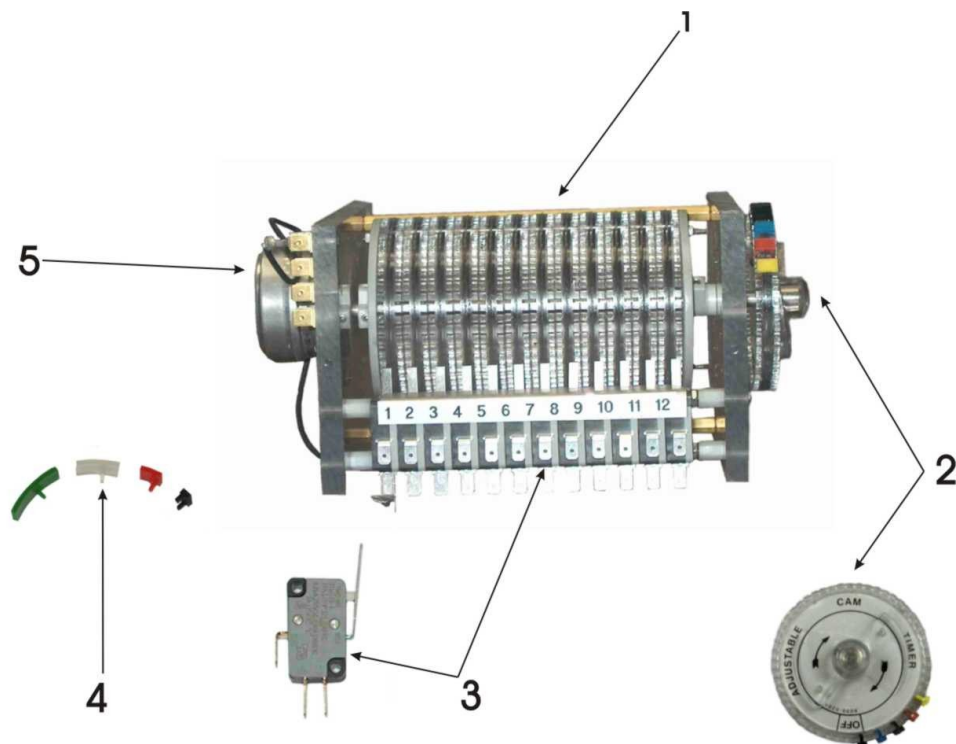
NO.	PART	DESCRIPTION
1	8000 0958	24 hour Mechanical Timer with Leads
2	5000 0010	Fuse Holder
3	8000 1972	Pressure Switch Replacement Kit
4	8001 0012	Adjustable Cam Timer
5	5000 0002	DPDT 3 Position Switch
6	8000 1486	Manifold Assembly
N/S	7000 0015	24 hour Timer Trippers

Model 31 Manifold Assembly 8000 1486



NO.	PART	DESCRIPTION
1	8000 1487	Manifold Block for Model 31
2	5000 0071	120V Coil
3	4000 0036	Plastic Hex Head Plug - 1/4" NPT
4	4000 0078	GHT Adapter - 1/2" NPT
5	4000 0069	Elbow Hose Adapter - 1/2" NPT - 5/8" ID Hose
6	7000 0184	Screen—3/4" Diameter
7	5000 0071	120V Coil for Valve Operator
8	8000 1404	Diaphragm Replacement Kit
9	8000 0474	Valve Operator Assembly
10	7000 0088	Brass Plug - 3/8"
11	8000 0656	Hold Down with 2 Holes
12	8000 1483	Hold Down with 4 Holes
13	8000 0934	Check Valve Assembly
14	8000 0041	Jar Adapter
15	8000 0756	Jar Gasket
N/S	7000 0089	9/16" ID 'O' Ring - inside Check Valve
N/S	7000 0152	1-1/8" ID 'O' Ring - outside Check Valve

Model 31 Timer



NO.	PART	DESCRIPTION
1	8001 0012	12 Cam Timer Complete
2	8000 0512	Timer Knob for Adjustable Cam Timer
3	8000 0508	Lever Switch
4	8000 2080	Replacement Segment Kit (12 of each color)
5	8000 0514	5 RPH Motor with Wire Assembly

Model 3I Replacement Parts



NO.	PART	DESCRIPTION
1	7000 0214	3/4" ID x 5' Feed Hose for HiFlow Models
2	7000 0011	Coated Jar
3	8000 1559	Anti-Siphon Hose Bracket for HiFlow Models
4	8000 0958	24 Hour Timer
5	5000 0002	Milk/Off/Wash DPDT 3 Position Switch
6	8000 1972	Pressure Switch
7	8000 1461	Sensing Tube Assembly
8	8000 1490	5/8" ID x 7/8" OD x 10' Fill Tube
N/S	8000 0497	Pressure Switch Hose 7/16" OD x 10'

Model 32 8000 1700



The Model 32 Pipeline Washer is designed to automatically clean or sanitize dairy farm pipelines with a minimum of labor and expense.

FEATURES

- Wall mounting of control panel keeps components away from the corrosive environment near the wash vat.
- The Model 32 is internally fused for added safety.
- One piece manifold directs water without problems of leaking hoses.
- The fully programmable cam timer makes it easy to tailor the Model 32 to the requirements of each dairy operation.
- The Model 32 has all of the above, plus increased gpm for fast fills.

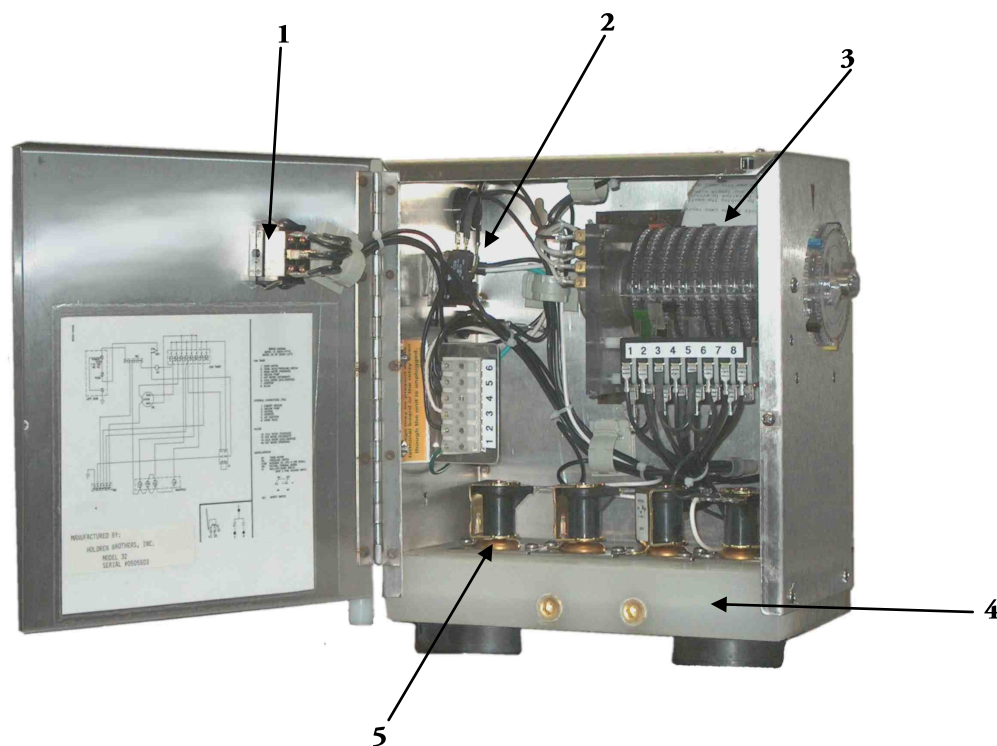
BENEFITS

- Timer assembly, switches, and motor can be replaced individually -- no need to replace entire unit..
- Pressure sensitive water level monitor assures constant gallonage regardless of water supply fluctuations.

ACCESSORIES

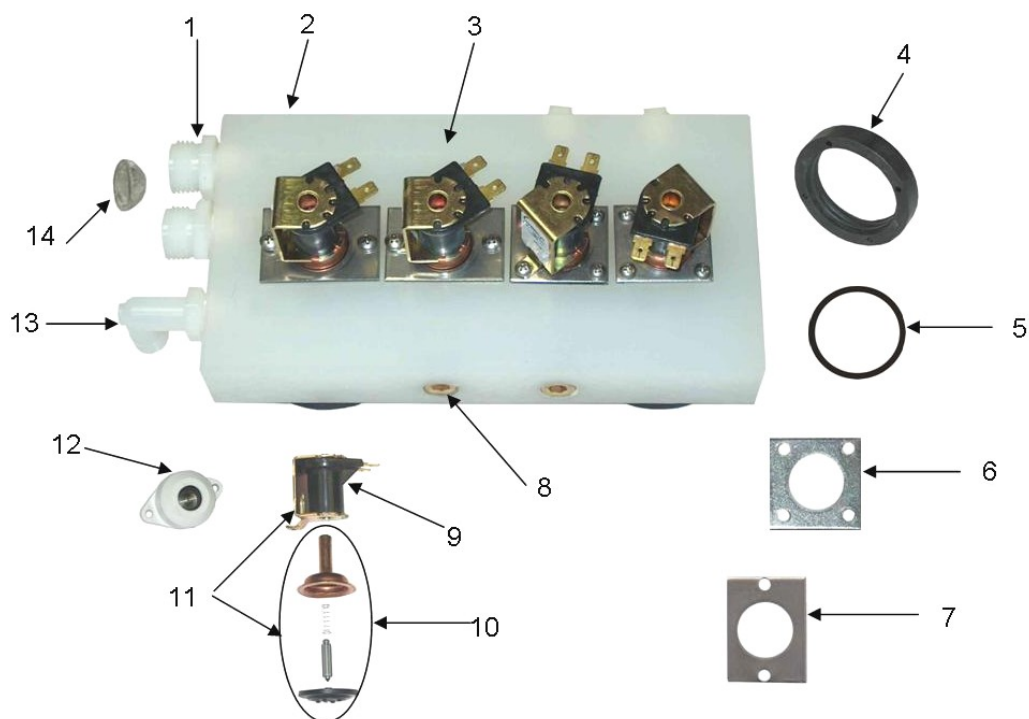
- Model 6 Diverter Assembly.
- Model 7 Drain Valve 2", normally open.
- Model 10 Drain Valve, 1-1/2" automatic vacuum type.

Model 32 Control Panel



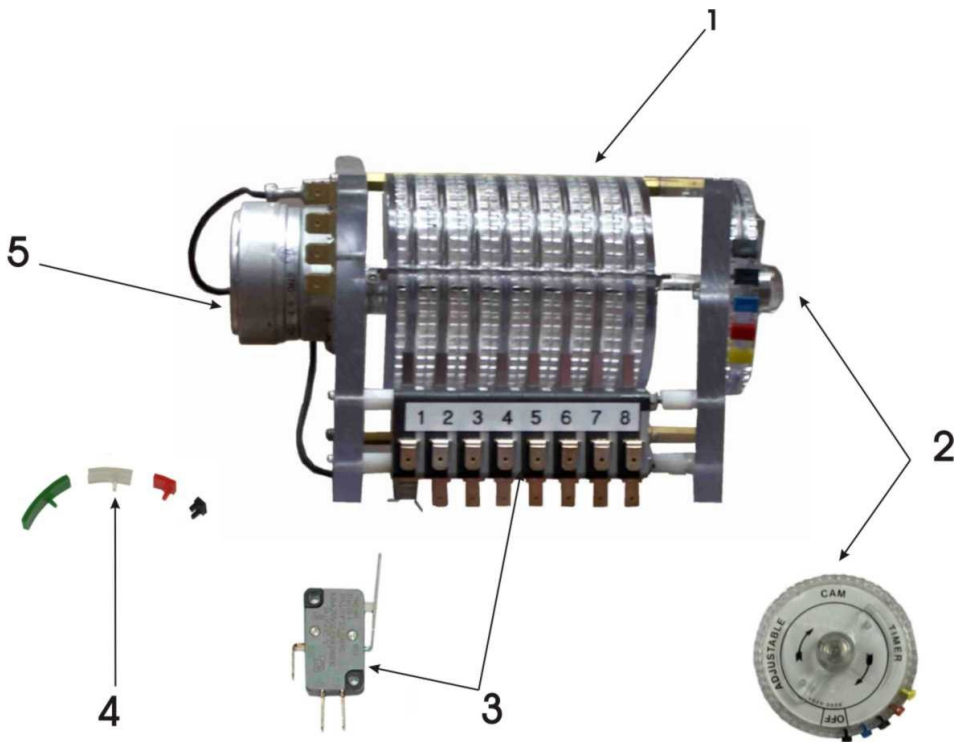
NO.	PART	DESCRIPTION
1	5000 0002	DPDT 3 Position Switch
2	8000 1972	Pressure Switch
3	8001 0008	Adjustable Cam Timer
4	8000 1485	Manifold Assembly
5	5000 0071	120V Coil for Valve Operator

Model 32 Manifold Assembly



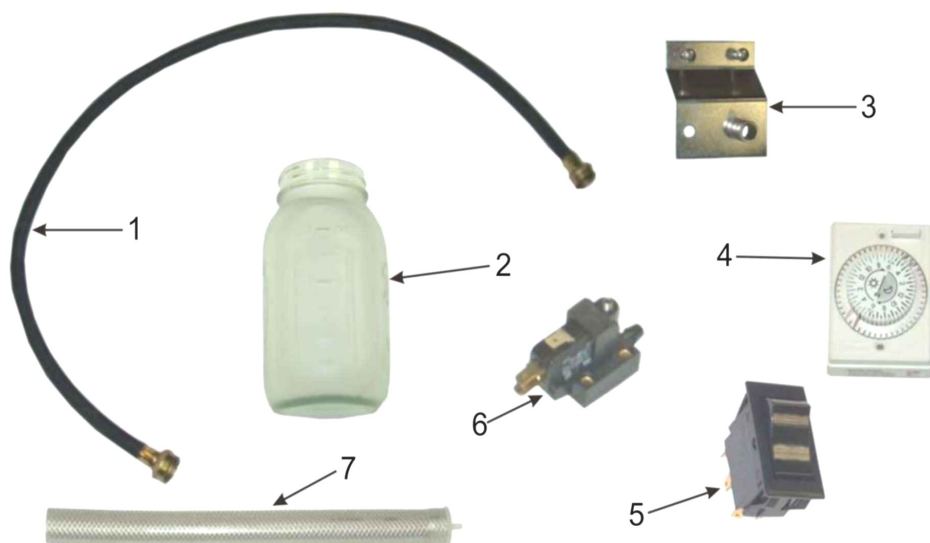
NO.	PART	DESCRIPTION
1	4000 0078	GHT Adapter
2	8000 1484	Manifold Block for Model 32
3	8000 1485	Manifold Assembly Complete for Model 32
4	8000 0041	Jar Adapter
5	8000 0756	Jar Gasket
6	8000 1483	Hold Down with 4 holes
7	8000 0656	Hold Down with 2 holes
8	7000 0088	3/8" Brass Plug
9	5000 0071	120V Coil for Valve Operator
10	8000 1404	Diaphragm Replacement Kit
11	8000 0474	Valve Operator Complete
12	8000 0934	Check Valve Assembly
13	4000 0069	Elbow Hose Adapter - 1/2" NPT
14	7000 0184	Screen—3/4" Diameter
N/S	7000 0089	9/16" ID 'O' Ring - inside Check Valve
N/S	7000 0152	1-1/8" ID 'O' Ring - outside Check Valve

Model 32 Timer



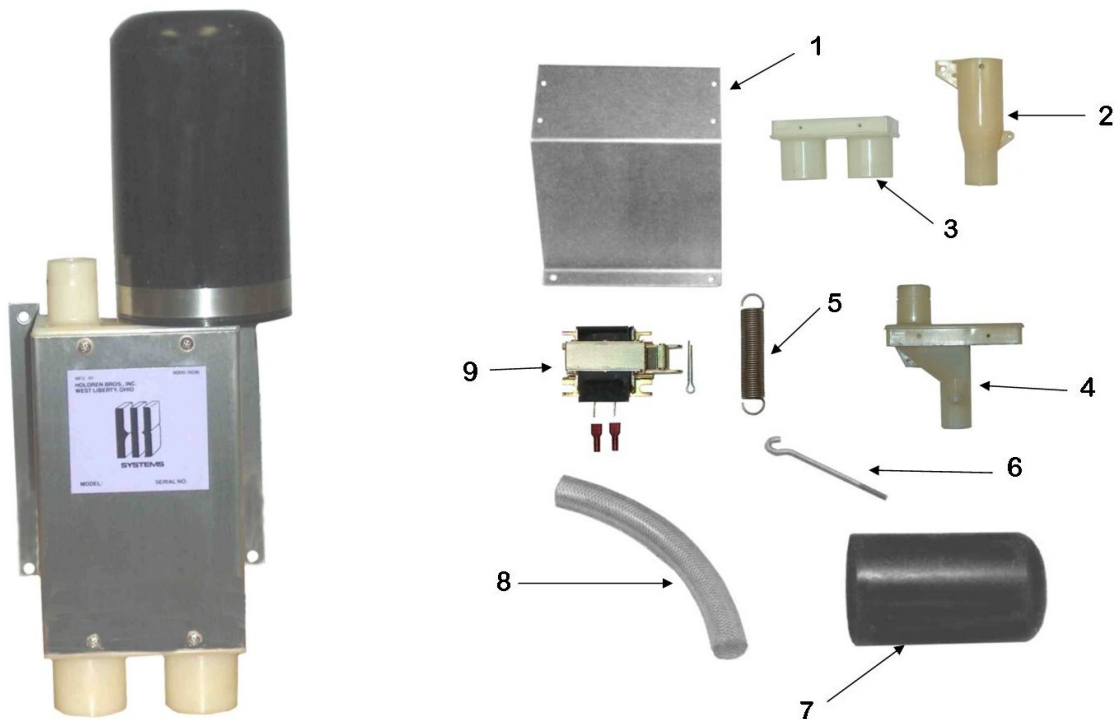
NO.	PART	DESCRIPTION
1	8001 0008	8 Cam Timer Complete
2	8000 0512	Timer Knob for Adjustable Cam Timer
3	8000 0508	Lever Switch
4	8000 2080	Replacement Segment Kit (12 of each color)
5	8000 0514	5 RPH Motor with Wire Assembly

Model 32 Replacement Parts



NO.	PART	DESCRIPTION
1	7000 0214	3/4" ID x 5' Feed Hose for HiFlow Models
2	7000 0011	Coated Jar
3	8000 1559	Anti Siphon Hose Bracket for HiFlow Models
4	8000 0958	24 Hour Timer
5	5000 0002	Milk/Off/Wash DPDT 3 Position Switch
6	8000 1972	Pressure Switch
7	8000 1461	Sensing Tube Assembly
N/S	8000 0497	Pressure Switch Hose 7/16" OD x 10'

Model 6 Diverter 8000 1635



NO.	PART	DESCRIPTION
1	8000 0690	Diverter Housing
2	8000 0479	Diverter Tube
3	8000 0722	Discharge Adapter
4	8000 0847	Diverter Cover
5	8000 0478	Diverter Spring
6	8000 0739	Pull Rod
7	8000 0130	Solenoid Cover
8	Special Order	1" ID Flexible Hose
9	8000 0107	Solenoid Assembly

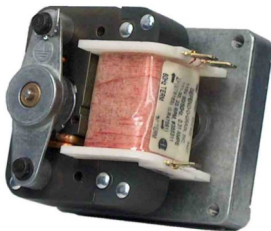
Model 7 Motorized Drain Valve 8000 1640



Model 10 Drain Valve 8000 1647

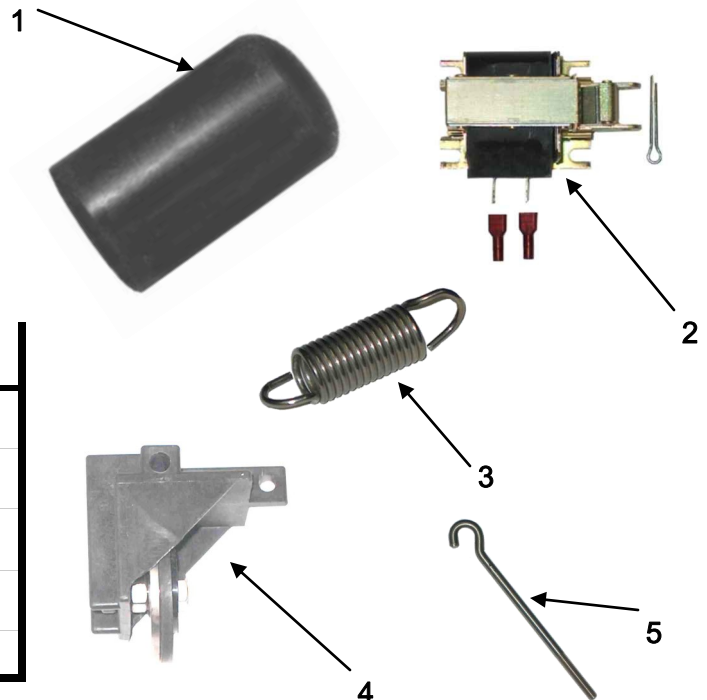


Model 7 Replacement Parts



A 31621- Motor for MDV

Model 10 Replacement Parts

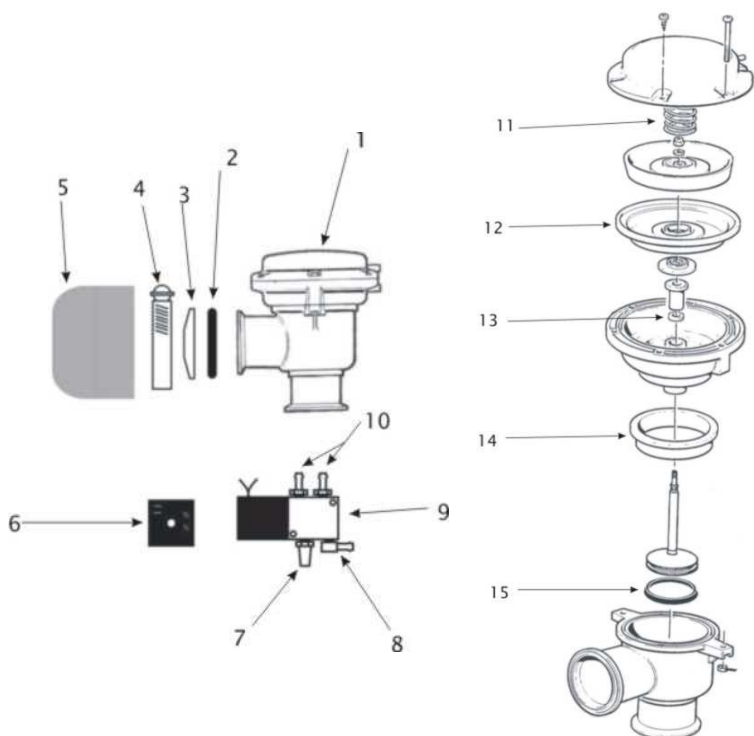


NO.	PART	DESCRIPTION
1	8000 0130	Solenoid Cover
2	8000 0107	Solenoid Kit
3	8000 0129	Tension Spring
4	8000 0147	Rocker Arm Assembly
5	8000 0152	Pull Rod

Whisper Jet 2 " Air Injector 31850



The Whisper Jet valve which opens to allow air into the system and closes to shut the air off is operated by vacuum. There is nothing which hammers open and shut causing loud noises and vibration which eventually wears out. The Whisper Jet has a solid state timer to control the ON and OFF time settings for the valve. The solenoid and timer are provided separately for mounting inside an automatic washer control box.

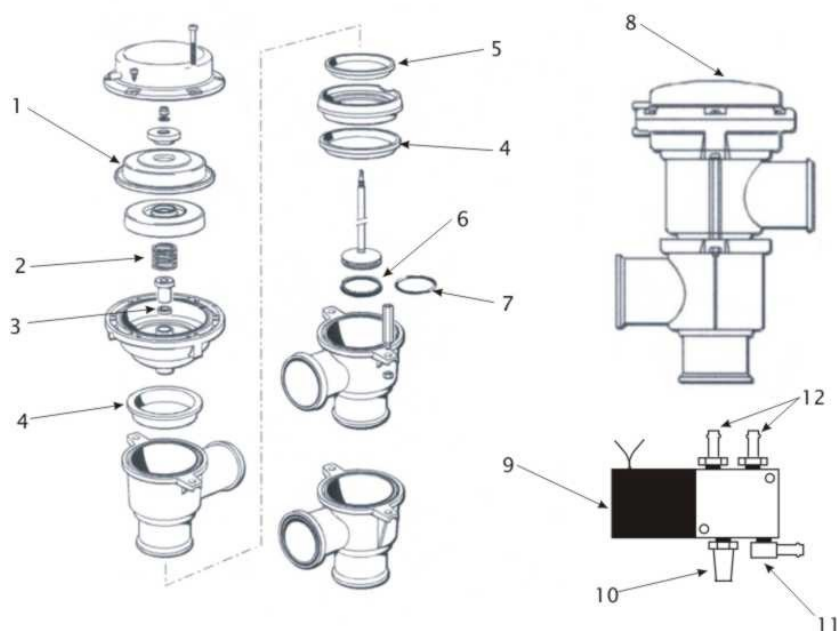


NO.	PART	DESCRIPTION
1	D498743	2" Valve Assembly—Clamp Fitting
2	F 30831	2" Hycar Gasket
3	A 03180	2" Sanipro End Cap
4	F 30721	2" V Insert Clamp
5	A 03185	Air Filter
6	A 03176	Cycle Timer
7	A 03171	1/4" Brass Filter
8	A 03170	1/4" Barb Fitting—Brass Elbow
9	A 31837	120VAC Solenoid Valve
10	A 03173	1/4" Barb Straight Fitting
11	D243721	Valve Spring
12	D381673	Diaphragm
13	D242738	Distributor Seal
14	D382756	Body Seal
15	D242740	Valve Seal

2" Wash Diverter 31700



The 2" Wash Diverter is a vacuum operated valve that is unaffected by moisture and chemical. The diverter has a 2" clamp fitting for system connections and adapts easily to PVC drain pipe or hose connections. Low maintenance.



NO.	PART	DESCRIPTION
1	D381673	Diaphragm
2	D243721	Compression Spring
3	D242738	Distributor Seal
4	D382756	Body Seal
5	D382759	Adapter Seal
6	D382772	Seal
7	D382740	"O" Ring
8	D498744	2" Clamp Diverter Valve
9	A 31837	120VAC Solenoid Valve
10	A 03171	1/4" Brass Filter
11	A 03170	1/4" Brass Barbed Fitting Elbow
12	A 03173	1/4" Brass Barbed Straight Fitting

